



## Installation and Configuration

---

The KROSBÉY Backup Manager software is distributed either on a CD or as a download. The CD or download consists of a so-called bootstrap file, which is basically an executable containing the minimal software code required to download the most recent version of KROSBÉY Backup Manager for your backup server, from one of KROSBÉY update servers.

In order to successfully install the KROSBÉY Backup Manager software, you need three pieces of information:

- BSP code = krosbeybackup
- User name for your backup account
- Password for your backup account

You have to choose an encryption key. Without the key, unauthorized users cannot access your data.

## Setup Wizard for Windows

---

The basic installation is performed using a Setup Wizard that takes you through the installation process in just a few minutes.

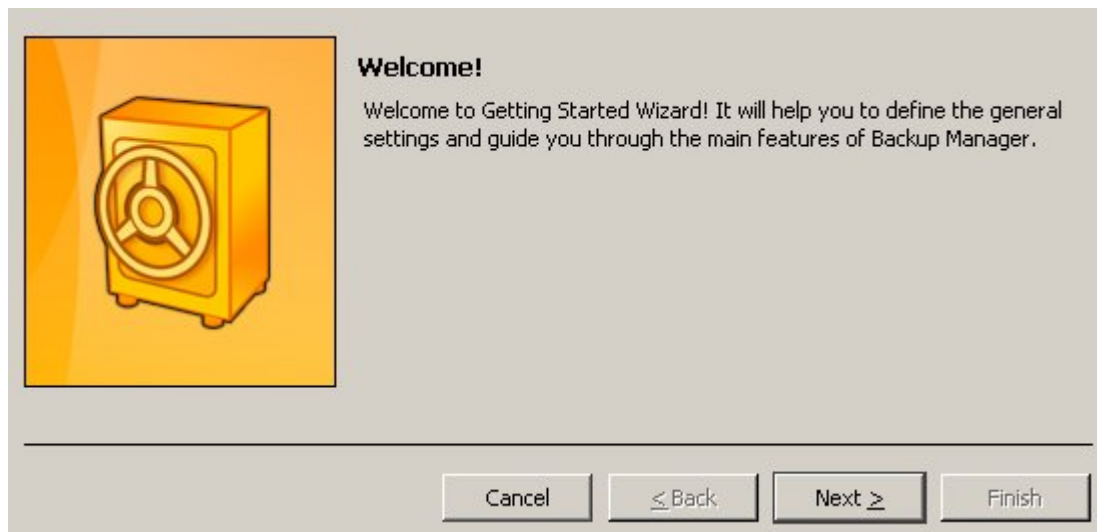
### Step 1 Enter BSP code and select language

---



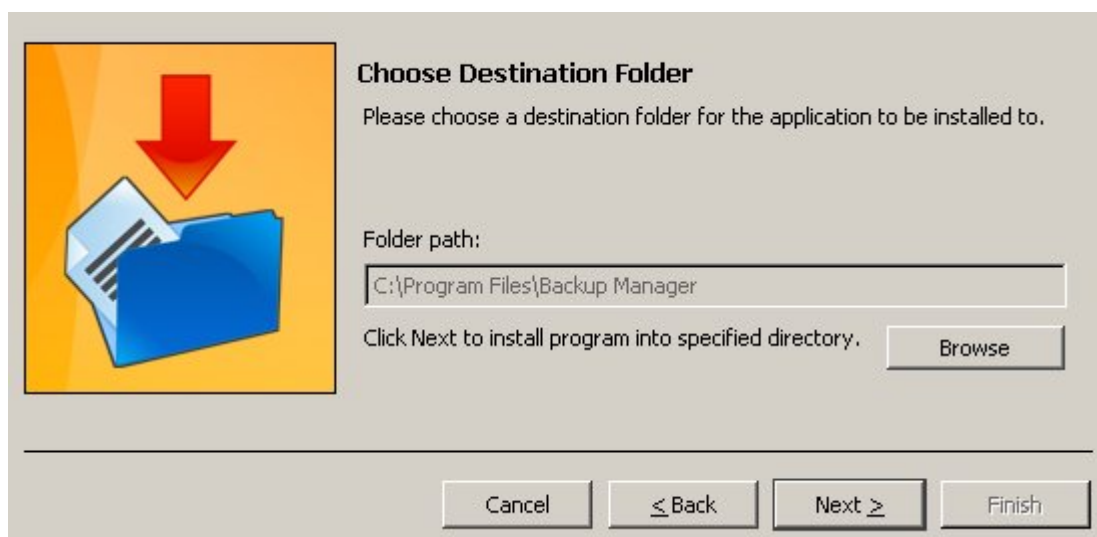
After you have entered your BSP (KROSBÉYBACKUP) code, the server specific settings and the most recent version of the KROSBÉY Backup Manager software are downloaded to your system. The default language for the application is the language of your operating system.

Note: !!! You can use the account information only one time on a single machine !!!  
If you use the code more than once, you cannot make a restore.



## Step 2 Choose destination folder


---



The software can be installed in any directory on a local drive on your machine.

## Step 3 Username and password

---



### Username and Password

Please enter your username and password in the fields below. It is important to save it in case you need to reinstall the program.

Username:

Password:

Cancel   ≤ Back   Next ≥   Finish

## Step 4 Enter the encryption key

---



### Enter Encryption Key

Please enter the key to be used for encryption of your data in the "Encryption Key" field and retype it in the "Confirm key" field for confirmation. The encryption key should be at least six characters long.


Encryption key:

Confirm encryption key:

Cancel   ≤ Back   Next ≥   Finish

The encryption key requires special attention. The key can be any word or sentence of your choosing and is used then the encryption algorithm encrypts your files to keep your data confidential. Without the key, no one can access your data. So the challenge is to use a key word that you can remember, but that no one else knows or can guess.

In case you are trying to use the encryption key that you have already used in the previous installation process, you will receive a message asking if you would like to override it (this can happen only if you are reinstalling the application).



This contract has been already used while another installation. This can happen only if you are reinstalling the application. Otherwise you should contact your Backup Service Provider. Are you sure you want to continue?

Yes   No

Note: Keep your encryption key safe. If you lose your key, your data gets lost.  
Not even the developers of the software can access your data without that key!

## Step 5 Email Address for Reporting

---



**Enter E-mail Address for Daily Reports**

If you would like daily backup reports to be sent to an e-mail address, please specify this address here. If you do not want to receive such reports, leave the field empty.

E-mail address:

Cancel   < Back   Next >   Finish

KROSBÉY Backup Manager sends a daily report of the backup results for your machine, to an e-mail address of your choice. From V4.7 allows sending daily reports to multiple e-mail addresses by ;

## Step 6 Schedule your backup

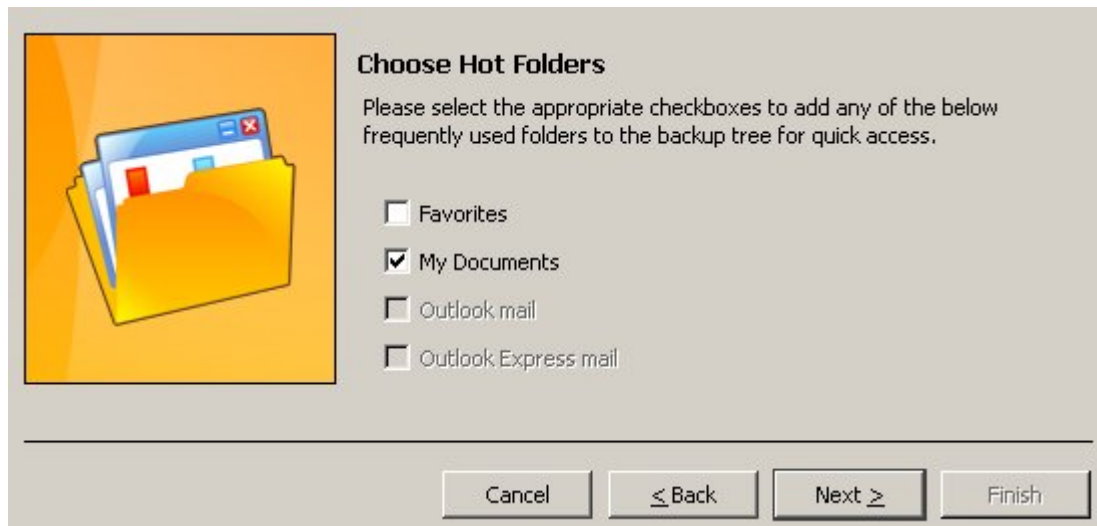
---



You can schedule daily backups to run at a fixed time or you can select to make a backup every time when you shut down the system. If you wish, you can activate both options.

## Step 7 Folder and File setting

---

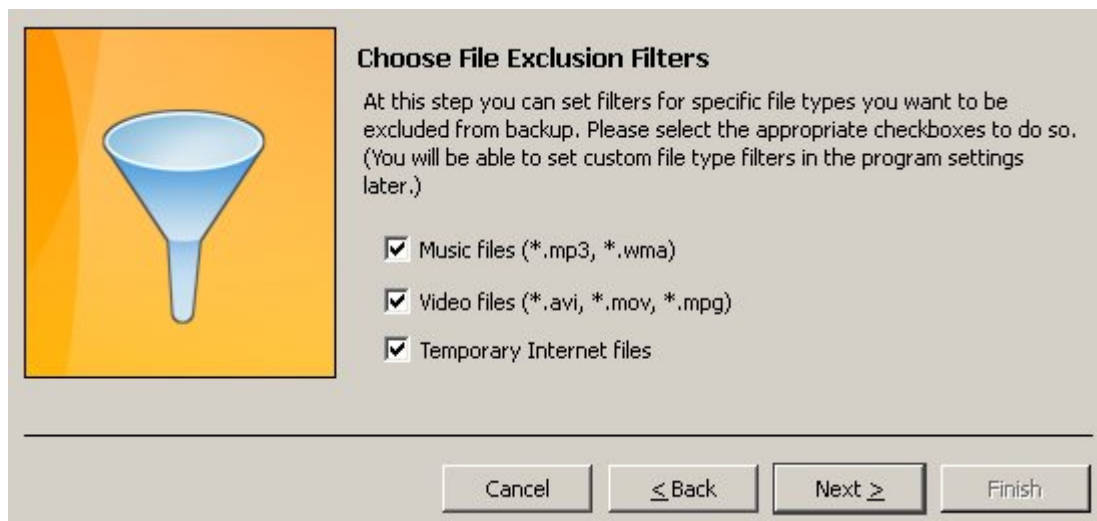


**Choose Hot Folders**

Please select the appropriate checkboxes to add any of the below frequently used folders to the backup tree for quick access.

- Favorites
- My Documents
- Outlook mail
- Outlook Express mail

Buttons: Cancel, ≤ Back, Next ≥, Finish



**Choose File Exclusion Filters**

At this step you can set filters for specific file types you want to be excluded from backup. Please select the appropriate checkboxes to do so. (You will be able to set custom file type filters in the program settings later.)

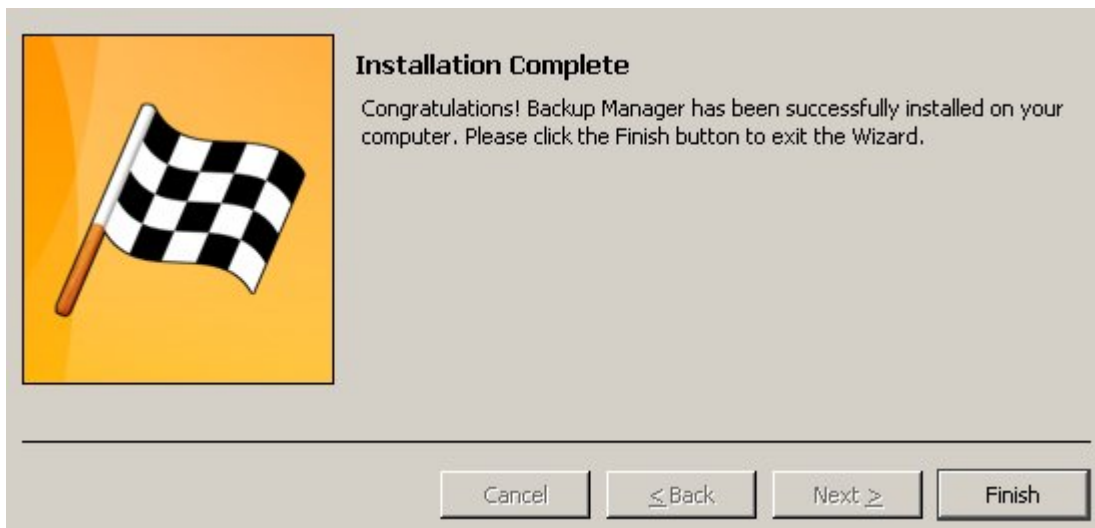
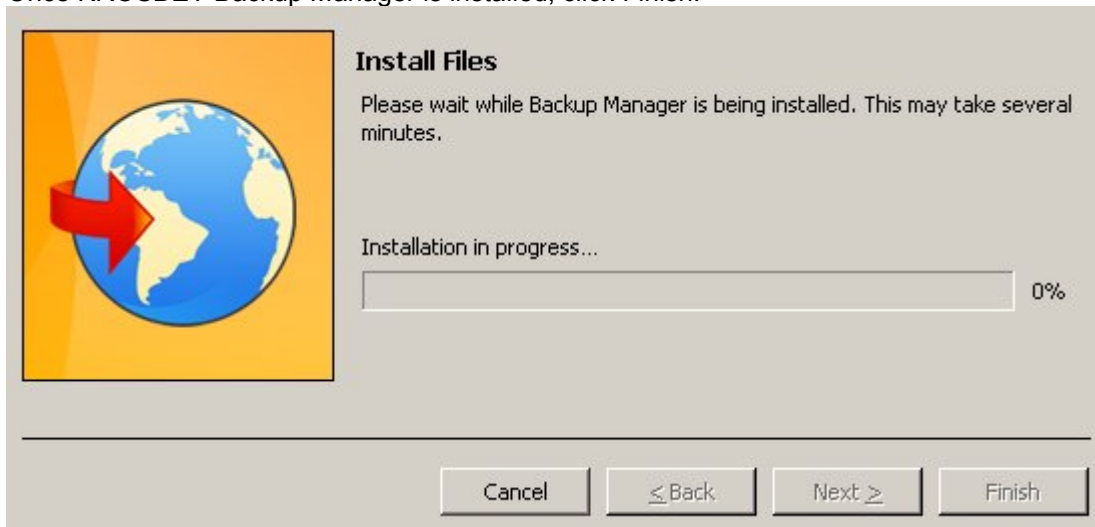
- Music files (\*.mp3, \*.wma)
- Video files (\*.avi, \*.mov, \*.mpg)
- Temporary Internet files

Buttons: Cancel, ≤ Back, Next ≥, Finish

The Hot Folder option enables you to quickly select the Favorites and My Documents folders from the backup file-tree. Using the file exclusion filters, you can limit the amount of backup data by automatically filtering certain types of data, such as multi-media files and temporary files.

Note: Exclusion filter settings prevail over backup inclusion settings. That means that all files complying with the exclusion filter will not be included in the backup, even if they were specifically selected.

Once KROSBÉY Backup Manager is installed, click Finish.



## Configuration

---

The most important step that needs to be executed now is the selection of the data that will be included in the backup. At this place we would like to emphasize the importance of making the right choices. Selecting too much unnecessary data wastes space on the backup server and extends the backup window more than necessary. However, not selecting enough data is even more damaging. After all, one cannot restore what has not been backed up!

The right backup selection is dependent on your applications. If you are not sure which files to select, we highly recommend that you contact your application vendor for advice.